

REVISIONS						
SHEET	ZONE	REV	ECO NO	DESCRIPTION	DATE	REV BY
-	-	00	602445	PRODUCTION RELEASE	2021-11-15	KNF

NOTES:

- 1 CUSTOMER TO FURNISH FUSED OR CIRCUIT BREAKER DISCONNECT PER LOCAL CODES.
- 2 REMOVE JUMPER FOR AUXILIARY E-STOP STRING DEVICES.
- 3 BELDEN TYPE 9842 4 CONDUCTOR 2 TWISTED PAIR W/ SHIELD OR EQUIVALENT TO MATCHING TERMINALS ON NEXT COMPRESSOR FOR SEQUENCING.
- 4 SEE TRANSFORMER CONNECTION TABLE FOR PROPER VOLTAGE CONNECTION. TRANSFORMER FUSING ON CLIPS LOCATED ON TRANSFORMER X1/XF INTERNALLY JUMPED. SEE TRANSFORMER FUSE CHART FOR SIZING.
- 5 REFER TO SEQUENCING AND PROTOCOL MANUAL.
- 6 SEE WIRING CHART FOR POWER AND MOTOR WIRING SIZE.
- 7 FAN OPTIONAL: NOT FURNISHED ON WATER COOLED WITHOUT CANOPY.

02250083-190 TRANSFORMER CONNECTIONS				
PRIMARY		SECONDARY VOLTS		
VOLTS	TAPS	XF-X2	XF-X3	XF-X4
208	H1-H2	85	100	110
220	H1-H2	91	110	120
230	H1-H2	95	115	125
240	H1-H2	99	120	130
380	H1-H3	91	110	120
400	H1-H3	95	115	125
416	H1-H3	99	120	130
440	H1-H4	91	110	120
460	H1-H4	95	115	125
480	H1-H4	99	120	130
500	H1-H5	85	100	110
550	H1-H5	91	110	120
575	H1-H5	95	115	125
600	H1-H5	99	120	130

0225002250261-689 TRANSFORMER CONNECTIONS			
PRIMARY			
VOLTS	SUPPLIED JUMPERS	SUPPLY LINES	INSTALL FUSE TO
220-240	NONE	2, 6	UNFUSED
440-480	NONE	2, 4	UNFUSED
550-600	NONE	2, 3	UNFUSED
220-240	8-6	1, 5	2-7, 5-8
440-480	4-8	1, 5	2-7, 5-8
550-600	3-8	1, 5	2-7, 5-8
SECONDARY			
VOLTS	SUPPLIED JUMPERS	SUPPLY LINES	INSTALL FUSE TO
110-120	NONE	2, 4	UNFUSED
90-100	NONE	2, 3	UNFUSED
110-120	NONE	1, 4	2-7
90-100	NONE	1, 3	2-7

POWER TERMINATIONS TORQUE (LB. -IN.)	
USE 75C COPPER CONDUCTORS ONLY TORQUE POWER TERMINALS PER TABLE	
14 - 10 AWG	35 LB.-IN.
8 AWG	40 LB.-IN.
6 - 2 AWG	45 LB.-IN.
1 - 3/0 AWG	50 LB.-IN.
460V 165A VSD	159-204 LB.-IN.
460V 208A VSD	159-204 LB.-IN.
575V 145A VSD	159-204 LB.-IN.
575V 192A VSD	283-354 LB.-IN.

COLOR ABBREVIATIONS	
BLACK	BK
BLUE	BL
BROWN	BN
GREEN	GN
GREY	GY
ORANGE	OR
PINK	PK
RED	RD
VIOLET	VT
WHITE	WT
YELLOW	YL
GREEN/YELLOW	G/Y

TB1
60 1
60 1
60 2
60 2

TRANSFORMER FUSE CHART		
VOLTAGE	PRIMARY FUSES	SECONDARY FUSE
460	2A	5A
575	2A	5A

LEGEND

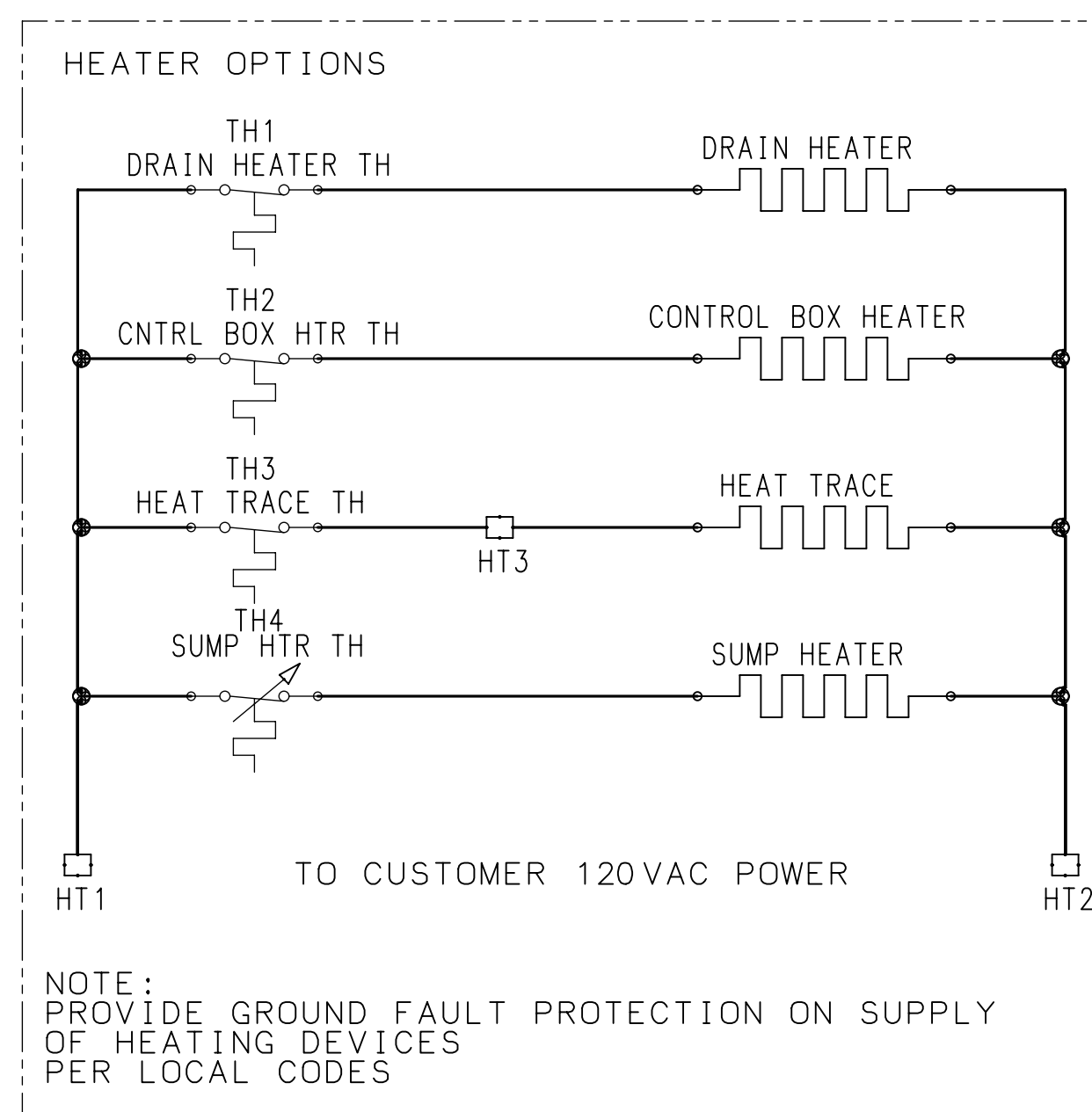
----- OPTIONAL COMPONENTS

----- CUSTOMER OPTION/PROVIDED

7 - A SH1 7 - A SH1 ON/OFF PAGE CONNECTORS

WIRE CALLOUT = WIRE # - GAUGE SIZE - WIRE COLOR
GAUGE SIZE/WIRE COLOR NOT ON WIRE TAG

MOTOR WIRING CHART (GGC CABLE)		
MACHINE (HP)	460V	575V
LS90 (125HP)	2/0	1/0
LS110 (150HP)	3/0	2/0
LS160 (200HP)	1/0 PARALLEL	1/0 PARALLEL



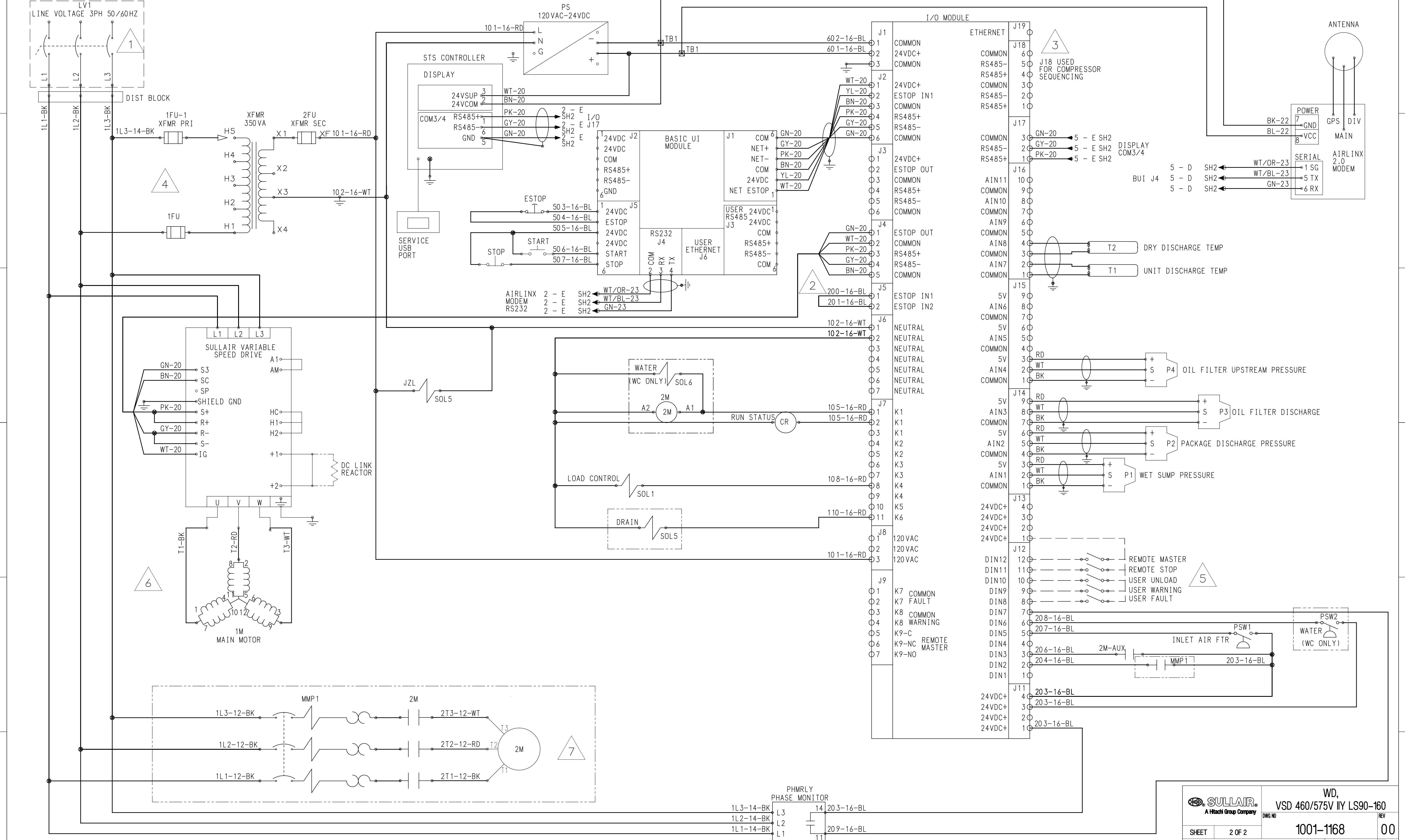
SULLAIR A Hitachi Group Company		MATERIAL	FINISH SPEC	WEIGHT	PROD CODE	DATE	2021-11-15
DESIGNED	-						
DRAWN	K.FOSTER						
ENGINEER	-						
STANDARDS	-						
SUPERVISOR	-						
MANAGER	-						
DATE	2021-11-15						

WD, VSD 460/575V I/Y LS90-160	
DWG NO	REV
1001-1168	00
1 OF 2	

THIS DOCUMENT IS THE PROPERTY OF SULLAIR. YOU MAY NOT REPRODUCE, USE, COPY OR DISSEMINATE THIS EQUIPMENT OR ANY INFORMATION TO BE FOR ANY PURPOSES WITHOUT SULLAIR'S WRITTEN PERMISSION. APPROVAL TO DESIGN, MANUFACTURE OR REPAIR PARTS OF THIS EQUIPMENT WITHOUT RECEIVING A RECEIPT AND PERMISSION FROM SULLAIR IS NOT AUTHORIZED. ANY REPAIRS TO THIS EQUIPMENT MUST BE PERFORMED BY SULLAIR TRAINED PERSONNEL. ANY REPAIRS PERFORMED BY OTHER PERSONNEL WILL VOID THE WARRANTY. SULLAIR ASSUMES NO LIABILITY FOR DAMAGE TO EQUIPMENT OR PERSONS ARISING FROM THE USE OF THIS EQUIPMENT.

THIRD ANGLE PROJECTION

SUBJECT TO EAR, ECCN EAR99 AND RELATED EXPORT CONTROL RESTRICTIONS



 SULLAIR A Hitachi Group Company		WD, VSD 460/575V IY LS90-160	
SHEET 2 OF 2		DWG NO 1001-1168	
SULLAIR PROPRIETARY INFORMATION. USE OR DISCLOSURE OF INFORMATION ON THIS PAGE IS SUBJECT TO THE NOTICE OR RESTRICTIONS ON THIS DOCUMENT'S FIRST OR TITLE PAGE.		REV 00 SIZE D THIRD ANGLE PROJECTION	