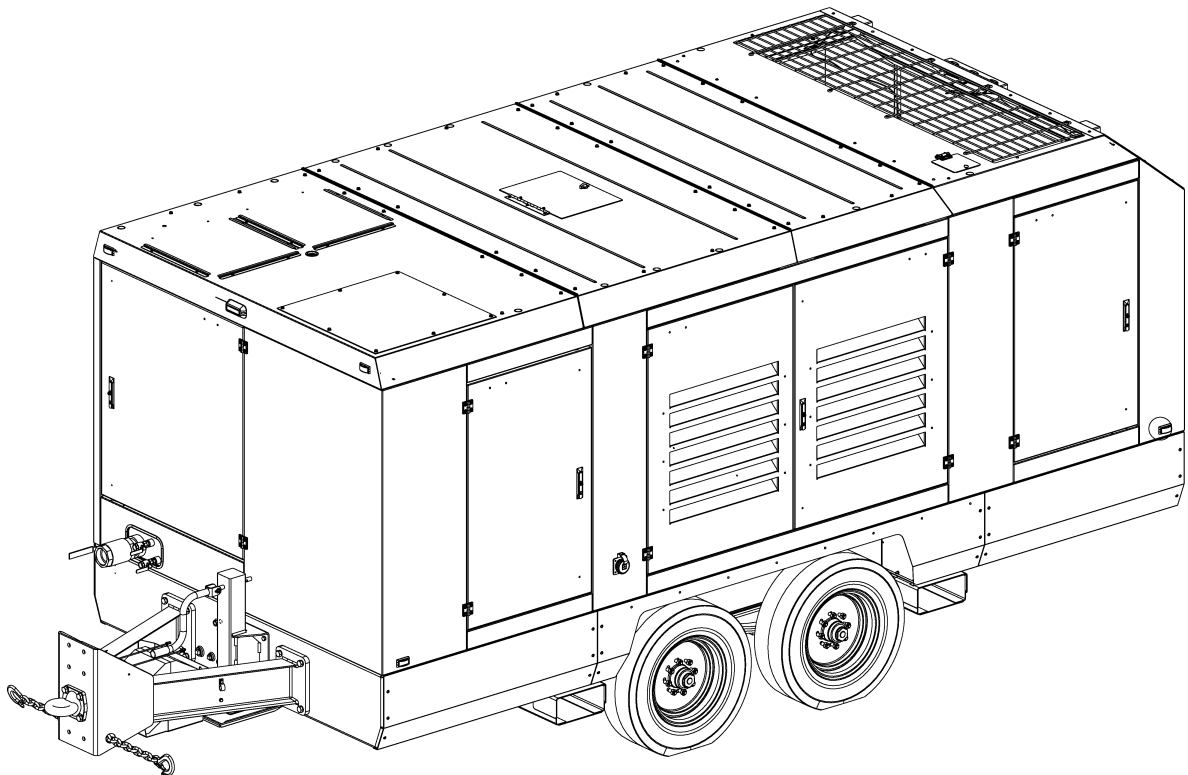




ADDENDUM

Portable Air Compressor 1600H

Tier 4 Final Condensate Management System Caterpillar/Perkins



PART NUMBER:
02250251-632 R02

SAFETY WARNING

Users are required to read the entire User Manual before handling or using the product.

WARRANTY NOTICE

Failure to follow the instructions and procedures in this manual, or misuse of this equipment, will void its warranty.

The information in this manual is current as of its publication date and applies to compressor models indicated on this cover with **serial number:**

US0116120001

and all subsequent serial numbers.

Publication date: 01/05/2024

Copyright © 2024 Sullair, LLC. All rights reserved.

Hitachi Global Air Power US, LLC

Subject to EAR, ECCN EAR99 and related export control restrictions.

Reading a Sullair Compressor Number

From 2006 through March 31st, 2022, serial numbers used on Sullair compressors have the following format:

2022	02	13	0035
Yr	Mth	Day	Seq

- **Yr** is the 4-digit year of the date the machine was serialized
- **Mth** is the 2-digit month of the date the machine was serialized
- **Day** is the 2-digit day of the date the machine was serialized
- **Seq** is a 4-digit sequence number for the machines serialized that day

Beginning April 1st, 2022, serial numbers used on Sullair compressors have the following format:

US01	22	04	0023
Loc	Yr	Mth	Seq

- **Loc** is a 2-letter+2-number code for the plant and product line where the machine was built
- **Yr** is the 2-digit year of the date the machine was serialized
- **Mth** is the 2-digit month of the date the machine was serialized
- **Seq** is a 4-digit sequence number for the machines serialized that month



Hitachi Global Air Power Training Courses

Hitachi Global Air Power training courses provide hands-on and classroom instruction for the proper operation, maintenance, and servicing of Sullair products. Individual courses on Portable compressors are offered at regular intervals throughout the year at the Hitachi Global Air Power's training facility located in Michigan City, Indiana and on-site at distributor locations.

Instruction includes training on the function and installation of Sullair service parts, troubleshooting common faults and malfunctions, and actual equipment operation. These seminars are recommended for maintenance, contractor maintenance, and distributor service personnel.

For more information contact:

Hitachi Global Air Power Training Department

1-888-SULLAIR or
219-879-5451 (ext. 5623)
training@sullair.com
www.SullairTraining.com

- Or Write -

Hitachi Global Air Power
1 Sullair Way
Michigan City, IN 46360
Attn: Training Department



Table of Contents

Section 1: Description.....7

- 1.1 Introduction & functional description..... 7
- 1.2 Piping and instrumentation - Condensate management system 8

Section 2: Operation11

- 2.1 Overview..... 11
- 2.2 Shutdown procedure 11

Section 3: Maintenance.....13

- 3.1 Overview..... 13
- 3.2 Troubleshooting..... 13

Section 4: Drawings15

- 4.1 Exhaust system 16
- 4.2 Exhaust pipe, 5 inches 24
- 4.3 Exhaust pipe tail, 5 inches..... 26
- 4.4 Discharge system - aftercooled/filtered with CMS..... 30
- 4.5 Drains - aftercooled/filtered with CMS 36

Notes:

Section 1

Description

1.1 Introduction & functional description

This compressor is equipped with Sullair's Condensate Management System (CMS). This system utilizes the waste heat from the engine exhaust to evaporate condensate produced when operating in after-cooled mode. Using CMS eliminates the need to collect and dispose of condensate.

When operating in after-cooled mode, condensate is produced by the aftercooler and separated from the air stream in the moisture separator. A small amount of additional condensate is removed by the after filters. These condensate streams are routed to the exhaust and driven by system pressure. Once at the exhaust, an atomizing nozzle is used to inject the condensate into the exhaust stream where it is evaporated.

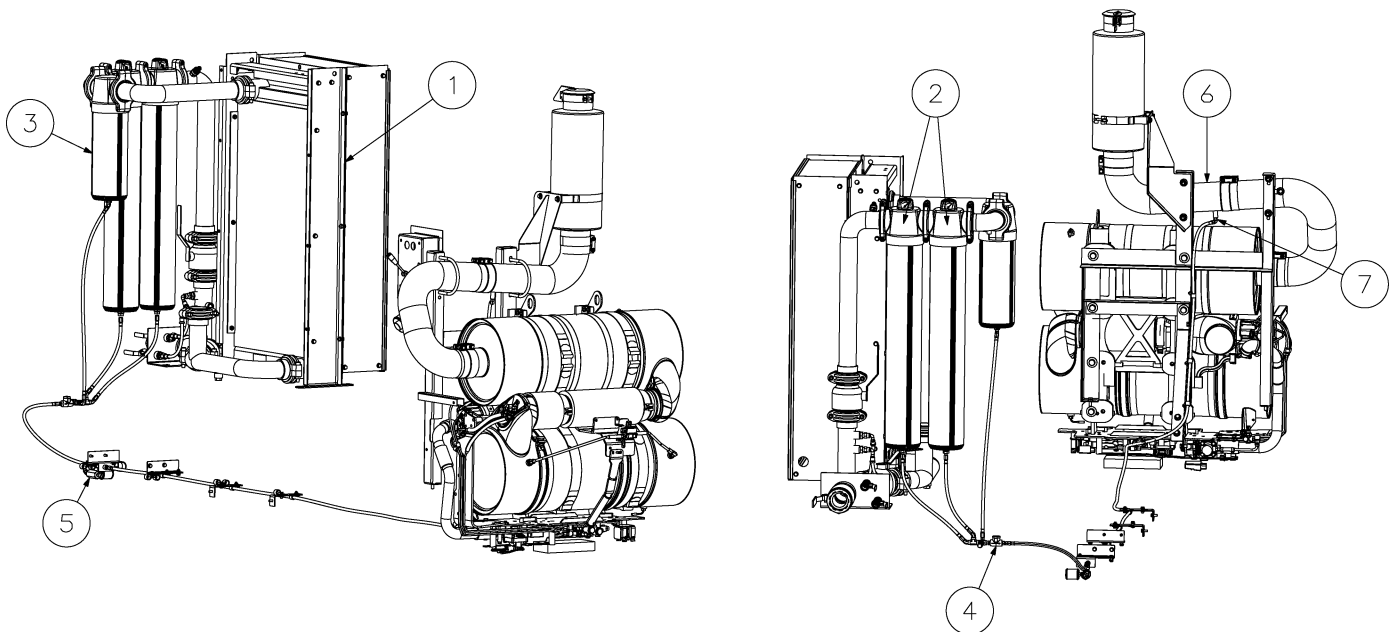


Figure 1-1: Discharge System with Condensate Management System

- | | |
|-----------------------|--------------------|
| 1. Aftercooler | 5. Blow-down valve |
| 2. After-filters | 6. Exhaust pipe |
| 3. Moisture separator | 7. Nozzle |
| 4. Strainer | |

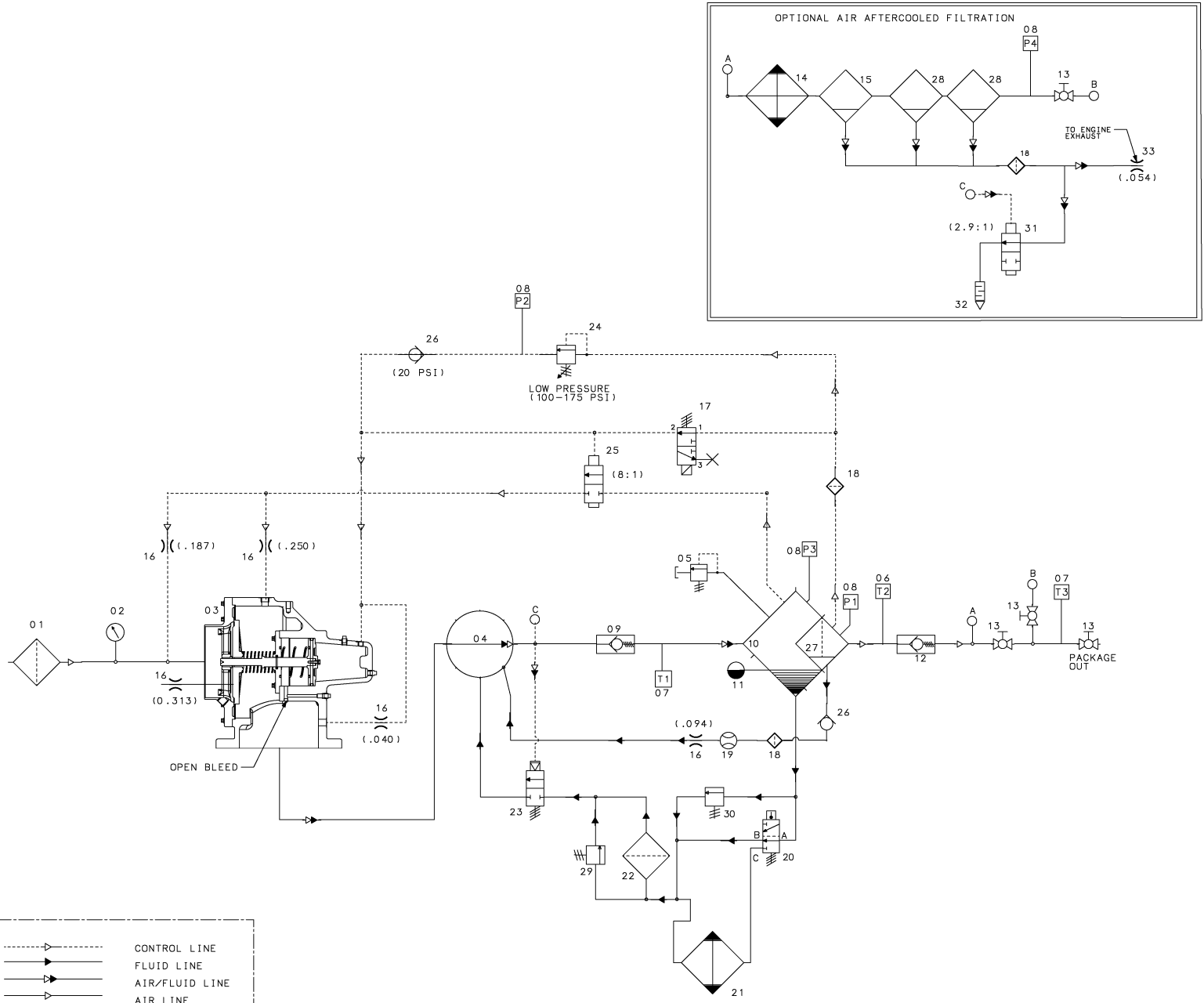
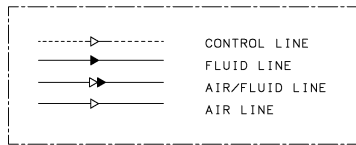
1.2 Piping and instrumentation - Condensate management system

Subject to EAR, ECCN EAR99 and related export control restrictions.

02250251-632 R02



02250250-793 R01



1.2 Piping and instrumentation - Condensate management system

Key	Description
1	FILTER,AIR
2	GAUGE,AIR FILTER RESTRICTION
3	VALVE,INLET
4	COMPRESSOR
5	VALVE,RELIEF
6	SWITCH,TEMPERATURE
7	SENSOR,TEMPERATURE
8	SENSOR,PRESSURE
9	VALVE,DISCHARGE CHECK
10	TANK,AIR OIL SEPARATOR
11	SIGHTGLASS,OIL LEVEL
12	VALVE,MINIMUM PRESSURE
13	VALVE,BALL
14	COOLER,AIR
15	SEPARATOR,MOISTURE
16	ORIFICE
17	VALVE,SOLENOID 3WNO
18	STRAINER
19	SIGHTGLASS,ORIFICE BLOCK
20	VALVE,THERMAL BYPASS
21	COOLER,OIL
22	FILTER,OIL
23	VALVE,OIL STOP
24	VALVE,BACKPRESSURE
25	VALVE,BLOWDOWN NC
26	VALVE,CHECK
27	ELEMENT,AIR/OIL SEPARATOR
28	FILTER,AFTERCOOLED AIR
29	VALVE,OIL FILTER RELIEF
30	VALVE,OIL COOLER RELIEF
31	VALVE,BLOWDOWN NO
32	SILENCER, BLOWDOWN

Key	Description
33	NOZZLE,SPRAY

Components

Component	Description
P1	DRY SIDE PRESSURE
P2	CONTROL PRESSURE
P3	WET SIDE PRESSURE
P4	AFTERCOOLER FILTER DISCHARGE PRESSURE
T1	COMPRESSOR DISCHARGE TEMPERATURE (CDT)
T2	RECEIVER TANK TEMPERATURE (RTT)
T3	AFTERCOOLER DISCHARGE TEMPERATURE

Notes:

Section 2

Operation

2.1 Overview

Follow machine operation guidelines from 1600H T4F CAT User Manual 02250225-985. The Condensate Management System is automatic and does not require additional inputs from the operator. It is important to slowly close the service valve prior to a shutdown. This allows the system to be purged of condensate during the cool down period.

2.2 Shutdown procedure

WARNING

The E-Stop (emergency stop switch) should be used only in the event of an emergency. Refrain from using the E-Stop to shut the machine down during normal operations or equipment damage can occur. All usage of the E-Stop is logged in permanent memory for use by service technicians when troubleshooting a machine. Non-emergency use of E-Stop is considered equipment abuse and could void the manufacturer's warranty.

Notes:

Section 3

Maintenance

3.1 Overview

The Condensate Management System is equipped with a strainer to prevent clogging of the atomizing nozzle. This

strainer should be cleaned every 250 hours. Refer to *Figure 1-1* on page 5 for location of strainer.

3.2 Troubleshooting

Table 3-1: Troubleshooting

Symptom	Probable cause	Remedy
Excessive amounts of water exiting service valve.	Plugged condensate line strainer preventing flow of condensate to exhaust stream.	Clean strainer.
	Plugged orifice in atomizing nozzle.	Clean orifice or replace nozzle. Care must be taken to not damage or move the pin during cleaning.

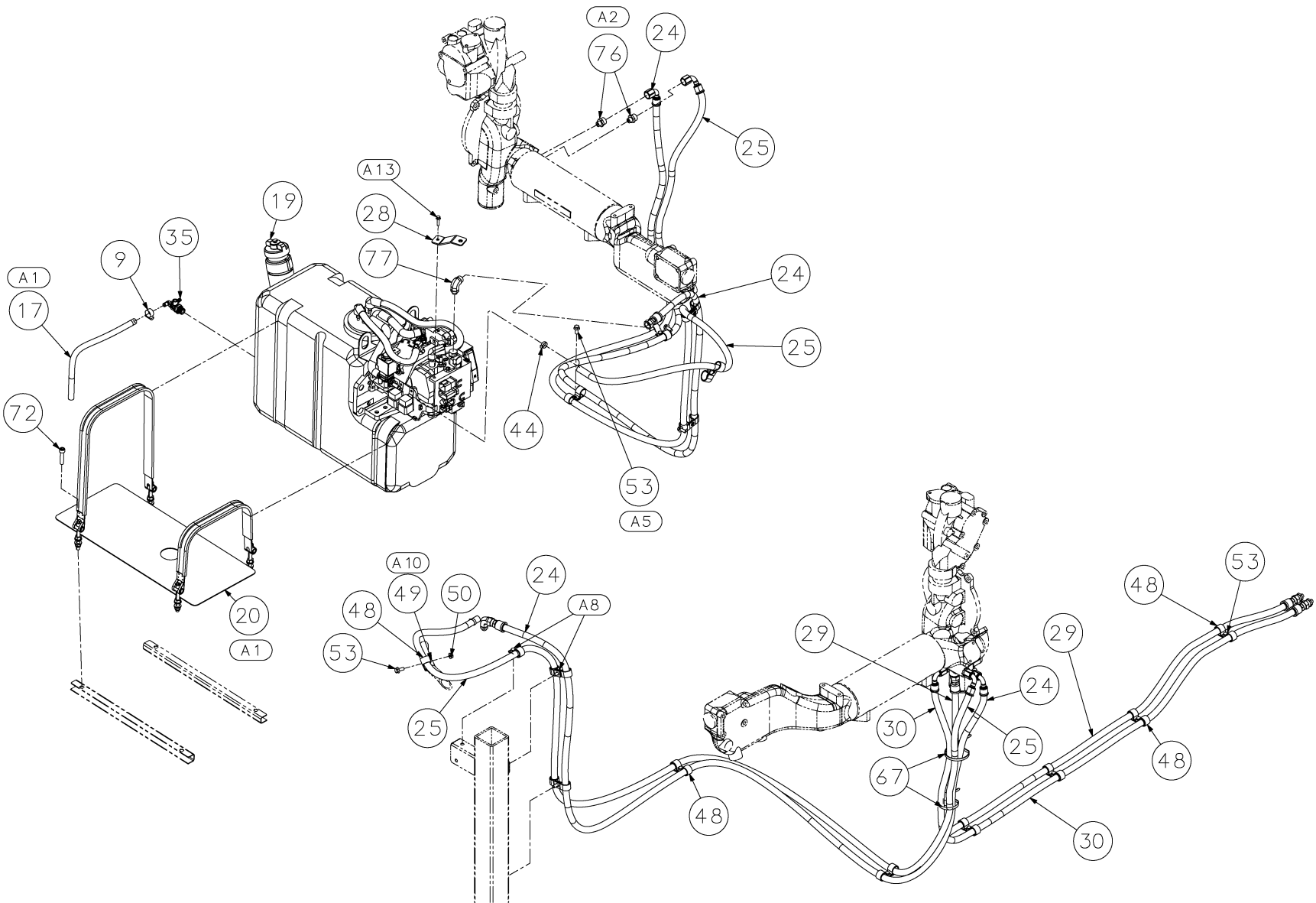
Notes:

Section 4

Drawings

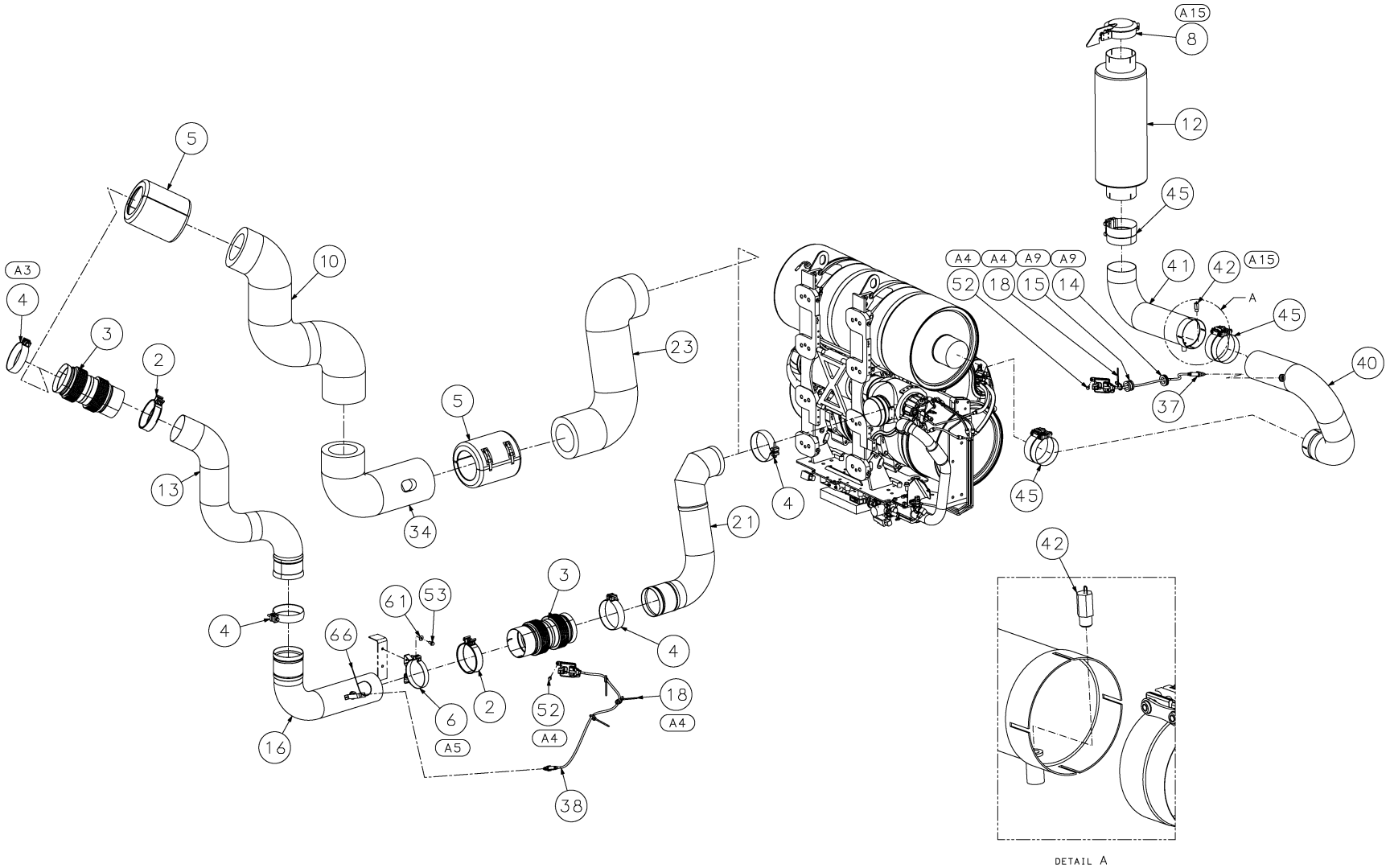
Consult your machine's primary parts list manual for any drawing not listed in this section.

4.1 Exhaust system

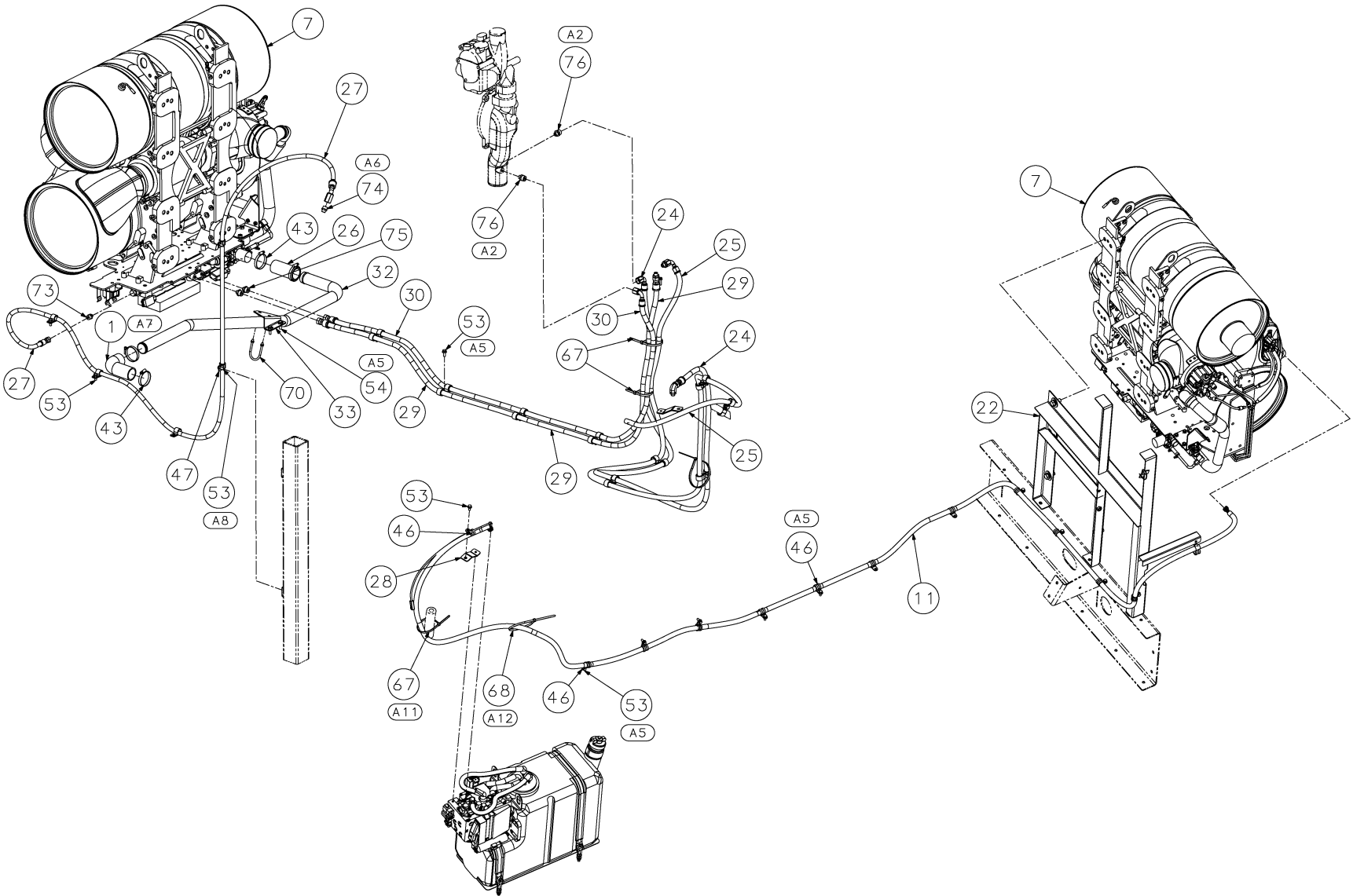


02250243-420 R01 (sh1)

4.1 Exhaust system

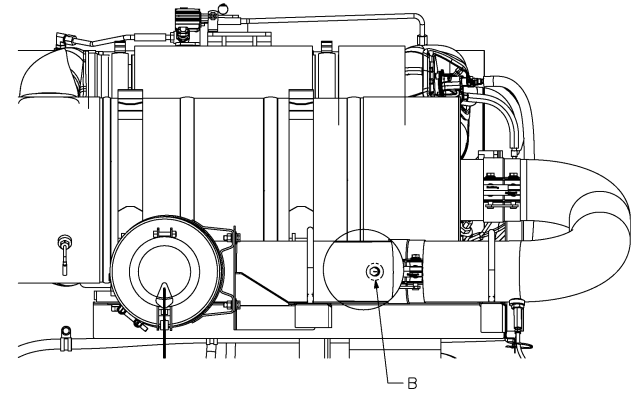
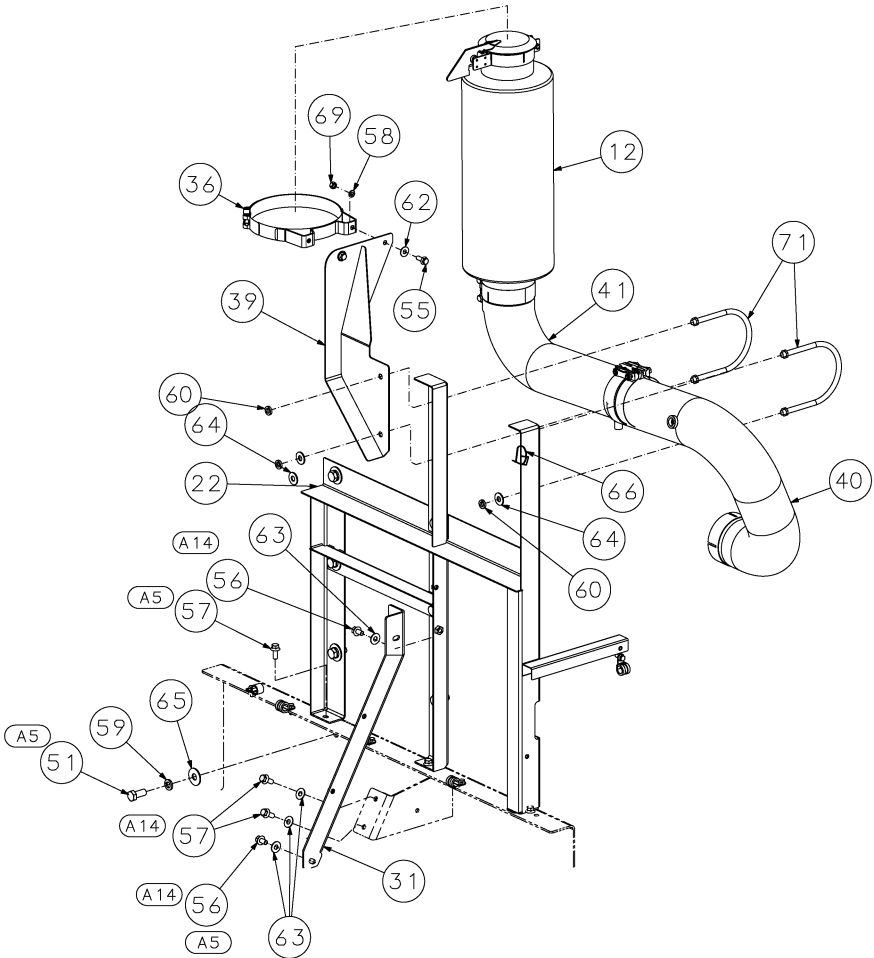


4.1 Exhaust system

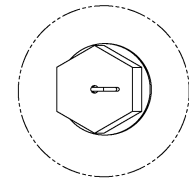


02250243-420 R01 (sh3)

4.1 Exhaust system



TOP VIEW



DETAIL B
ORIENTATION OF NOZZLE

4.1 Exhaust system

Key	Part number	Qty	Description	Notes
1	02250190-467	1	ELBOW,SILICONE 1.75" ID	
2	02250190-484	2	CLAMP,BAND 5" FLAT CAT	SHIPPED LOOSE
3	02250191-399	2	JOINT,EXPANSION 5" BELLOWS CAT	SHIPPED LOOSE
4	02250191-406	4	CLAMP,BAND BALL JOINT 5" CAT	SHIPPED LOOSE
5	02250193-412	2	WRAP,BLANKET CEM BELLOWS	SHIPPED LOOSE
6	02250204-369	1	BAND,MOUNTING 5"	
7	02250204-467	1	ENGINE EXHAUST SYSTEM,CAT C15 T4F	
8	02250210-393	1	CAP,RAIN 5" STAINLESS	
9	02250213-574	1	CLAMP,WRM DRV SAE 10	
10	02250219-657	1	WRAP,EXH 1600 CEM	
11	02250219-882	1	HOSE,ASSY DEF LINE	SHIPPED LOOSE
12	02250220-099	1	MUFFLER,5" INLET ID	
13	02250220-323	1	PIPE,EXHAUST TO CEM	
14	02250220-466	1	GROMMET,RUB 1.375X1.875X.1875	
15	02250220-467	1	GROMMET,RUB 1.375 X 1.75 X .5	
16	02250220-547	1	PIPE,EXHAUST TO CEM	
17	02250220-616	1	HOSE,DEF TRANSFER 3/8" ID	
18	02250221-086	4	WRAP,PUSH LOK TIE	
19	02250221-228	1	TANK,DEF 12.7GAL W/PETU	SHIPPED LOOSE
20	02250221-515	1	STRAP,ASSY DEF TANK	SHIPPED LOOSE
21	02250223-608	1	PIPE,EXHAUST TO CEM	
22	02250223-618	1	SUPPORT,BRACKET CEM MOUNT	
23	02250223-637	1	WRAP,EXHST PIPE 1600J	
24	02250223-662	1	HOSE,MP 13/32" ID X 120.5" OAL	
25	02250224-050	1	HOSE,MP 13/32" ID X 140.5" OAL	
26	02250224-067	1	HOSE,STR SILICONE 1.75" ID	
27	02250224-102	1	HOSE,MP 5/16" ID X 134.5" OAL	
28	02250224-111	1	SUPPORT,BRACKET DEF LINE 1600J	
29	02250224-144	1	HOSE,MP 13/32" ID X 93.5" OAL	
30	02250224-145	1	HOSE,MP 13/32" ID X 90" OAL	
31	02250226-037	1	SUPPORT,BRACKET CEM MOUNT	
32	02250227-001	1	PIPE,CEM TO CAC 1600	

4.1 Exhaust system

Key	Part number	Qty	Description	Notes
33	02250227-002	1	SUPPORT,BRACKET CAC PIPE	
34	02250227-162	1	WRAP,EXHST PIPE 1600J	
35	02250227-362	1	VALVE,BALL DEF DRAIN 3/4-16	
36	02250232-723	1	BAND,EXH MUFFLER 9" OD	
37	02250248-230	1	SENSOR,NOX 15L T4F TAIL	SHIPPED LOOSE
38	02250248-231	1	SENSOR,NOX 15L T4F TURBO	SHIPPED LOOSE
39	02250250-685	1	SUPPORT,BRACKET MUFFLER	
40	02250250-766	1	PIPE,EXHST 5.0"	
41	02250250-767	1	PIPE,EXHST TAIL 5.0"	
42	02250250-769	1	NOZZLE,1/4" NPT	
43	040083	4	CLAMP, HOSE 1 13/16 - 2 3/4ADJ	
44	043197	1	CLAMP, HOSE 1/2"	
45	241260	3	CLAMP,SEAL 5"	
46	250025-635	13	CLAMP, TUBE RUBR CTD 7/8" DIA	
47	408300-003	5	CLAMP, HOSE O.D. .750	
48	408300-004	18	CLAMP, HOSE O.D. .875	
49	408300-005	1	CLAMP, HOSE O.D. 1.062	
50	825305-283	1	NUT, HEX FLGD PLTD 5/16-18	
51	829216-035	8	CAPSCREW,HEX 10.9 M16 X 35MM	
52	829704-075	4	SCREW, HX SER WASH 1/4 X 3/4"	
53	829705-075	28	SCREW, HX SER WASH 5/16 X 3/4"	
54	829705-100	2	SCREW, HX SER WASH 5/16 X 1"	
55	829706-100	2	SCREW, HX SER WASH 3/8 X 1"	
56	829707-075	2	SCREW, HEX SER WASH 7/16X3/4"	
57	829707-100	5	SCREW, HEX SER WASH 7/16 X 1"	
58	837806-094	2	WASHER,SPRLOCK REG PLTD 3/8	
59	837810-156	8	WASHER, SPRLOCK REG PLTD 5/8"	
60	838008-125	4	WASHER, SPRLOCK REG PLTD 1/2"	
61	838205-071	2	WASHER,PL-B REG PLTD 5/16	
62	838206-071	2	WASHER,PL-B REG PLTD 3/8	
63	838207-071	4	WASHER, PL-B REG PLTD 7/16"	
64	838208-112	4	WASHER, PL-B REG PLTD 1/2"	

4.1 Exhaust system

Key	Part number	Qty	Description	Notes
65	838210-112	8	WASHER, PL-B REG PLTD 5/8"	
66	843201-023	2	WRAP, TIE NYLON TY23MX	
67	843201-027	3	WRAP, TIE NYLON TY27MX	
68	843201-272	1	WRAP, TIE NYLON TY272MX	
69	866506-337	2	NUT, HEX 3/8-16 PLT	
70	868304-125	1	U-BOLT 1/4 X 1 1/4" PIPE PLT	
71	868308-500	2	U-BOLT, 1/2 X 5" PIPE PLTD	
72	874510-045	4	SCREW, SOCKET ISO M10X45MM PC 12.9	
73	884406-044	1	CONNECTOR, STR THD/ORFS 7/16 X 3/8	
74	884406-056	1	CONNECTOR, STR THD/ORFS 9/16 X 3/8	
75	884408-025	2	CONNECTOR, STR THD/ORFS 7/16 X 1/2	
76	884408-056	4	CONNECTOR, STR THD/ORFS 9/16 X 1/2	
77	888708-056	1	ELBOW, ST THD/ORFS 9/16 X 1/2	

Drawing notes

A1	TO FUEL TANK (CURB SIDE)
A2	TO ENGINE WATER PUMP
A3	TO ENGINE DIFFUSER
A4	TO COOLING FAN SHROUD
A5	TO FRAME
A6	TO ENGINE FUEL FILTER
A7	TO CHARGE AIR COOLER
A8	TO LIFT BAIL SUPPORT
A9	TO COOLER SUPT BRKT
A10	TO FUEL HOSE
A11	WRAP TO FUEL BREATHER HOSE
A12	WRAP TO DEF HOSE
A13	USE EXISTING BOLT FROM DEF TANK
A14	BOLTS TO BE LOCKED WITH MEDIUM STRENGTH SCREW LOCK ADHESIVE PER SULLAIR ENG. SPEC 005898; COLOR CODE BLUE
A15	ORIENT AS SHOWN

Notes:



02250251-632 R02
Subject to EAR, ECCN EAR99 and related export control restrictions.

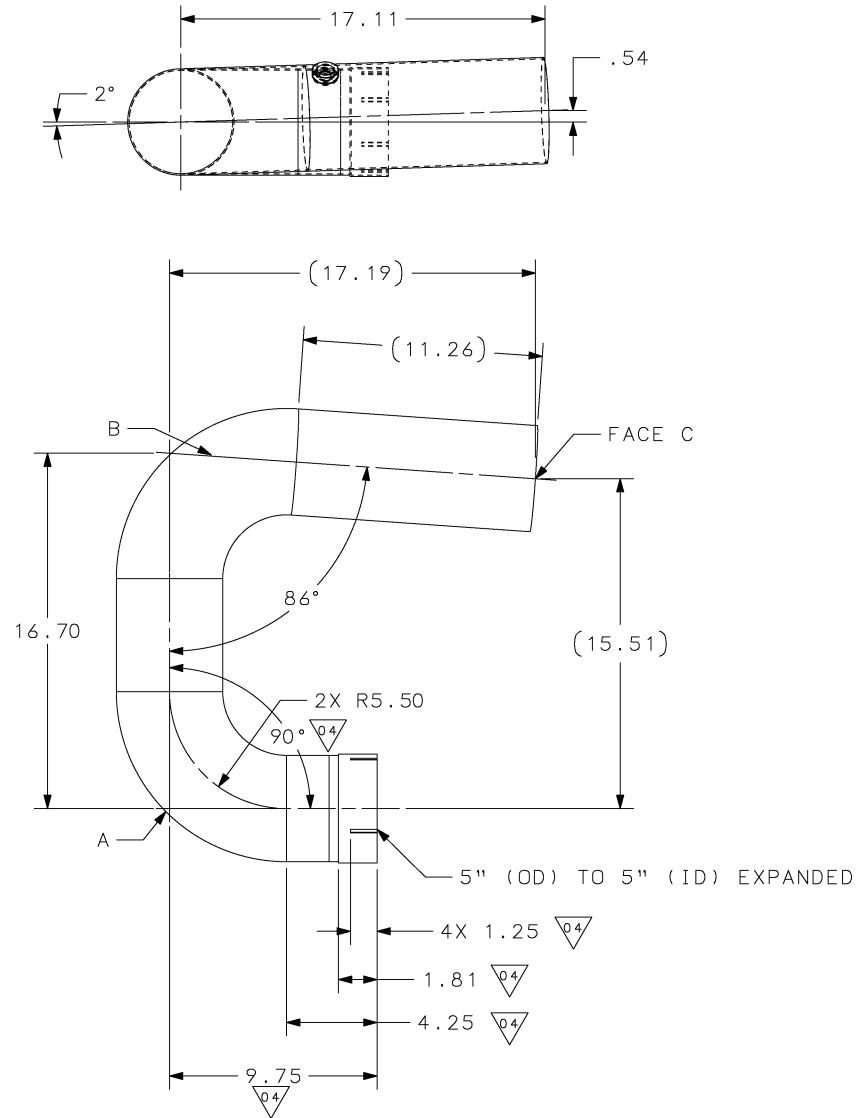
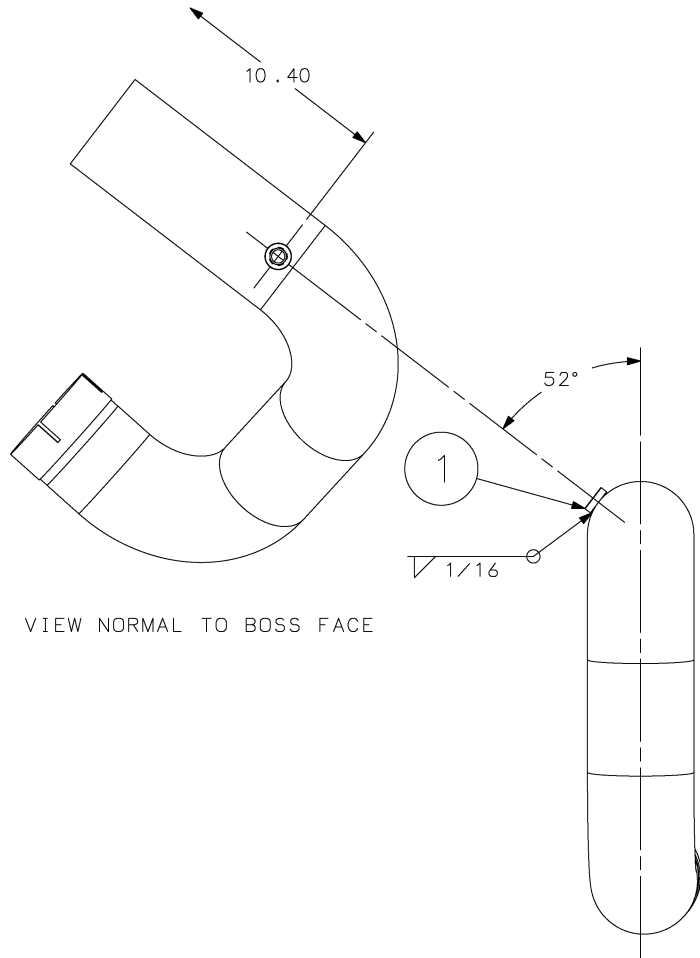
4.2 Exhaust pipe, 5 inches

Subject to EAR, ECCN EAR99 and related export control restrictions.

02250251-632 R02



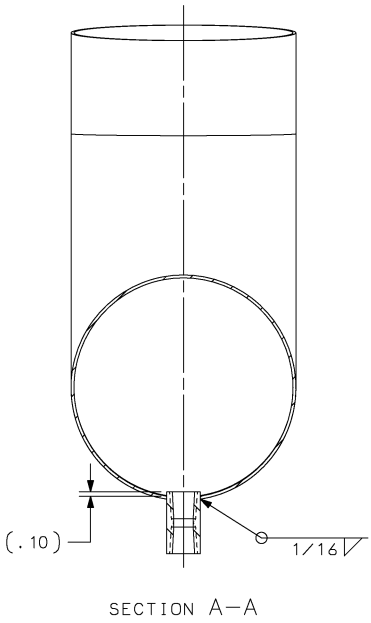
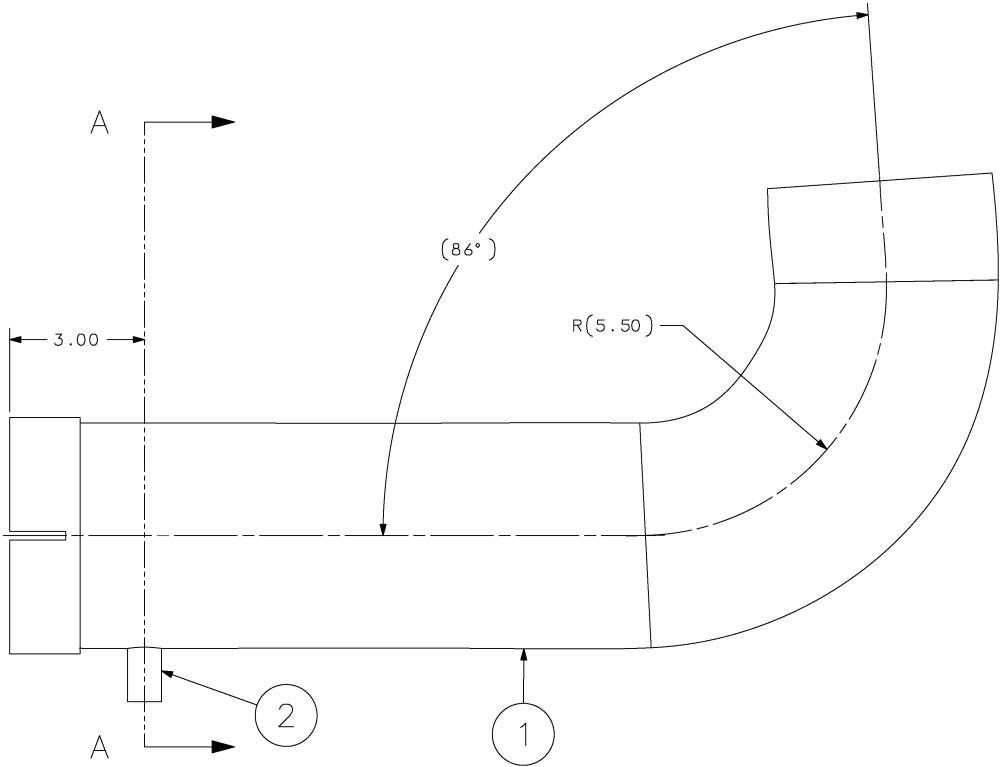
02250250-766 R04



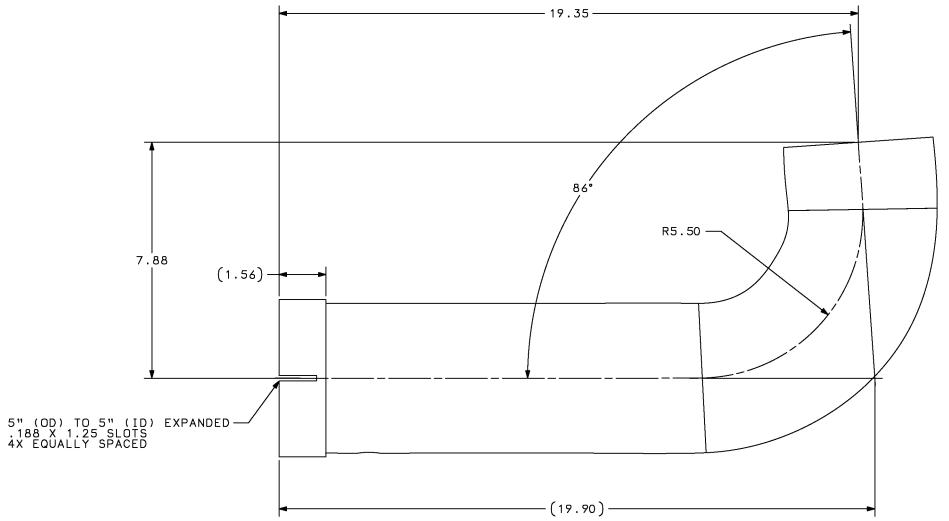
4.2 Exhaust pipe, 5 inches

Key	Part number	Qty	Description	Notes
1	02250209-768	1	COUPLING,BOSS EXH M20	
Drawing notes				
1	MARK/TAG COMPONENT/CONTAINER WITH SULLAIR PART NUMBER AND REVISION.			
2	TUBE CUT-OFF TO BE SQUARE TO O.D. WITHIN 3 DEGREES MAXIMUM.			
3	LIGHTLY DEBURR TUBE ENDS INTERNALLY AND EXTERNALLY.			
4	MATERIAL: 5.00" O.D. 16GA. 304 STAINLESS STEEL TUBING.			
5	INTERIOR TO BE FREE OF DEBRIS. CAP BOTH ENDS WITH PLASTIC CUPS PRIOR TO SHIPMENT.			
6	CAD MODELS ARE AVAILABLE UPON REQUEST.			
7	PIPE CAN BE MANUFACTURED BY WELDING 2 PIECES TOGETHER BETWEEN A & B.			
8	SLOT 4X EQUALLY SPACED. DIMENSIONS: .188 +/- .09 X 1.125 +/- .19 SLOTS			

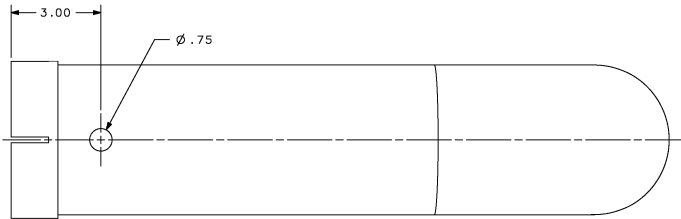
4.3 Exhaust pipe tail, 5 inches



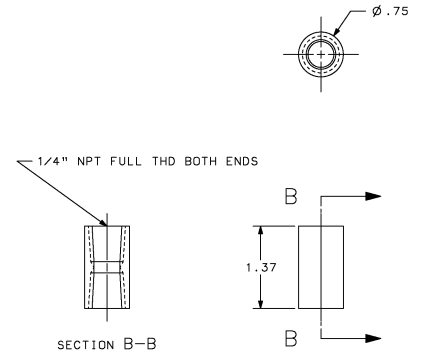
4.3 Exhaust pipe tail, 5 inches



5" (OD) TO 5" (ID) EXPANDED
1.88 X 1.25 SLOTS
4X EQUALLY SPACED



1 PART NUMBER: 02250250-767-01
DESCRIPTION: PIPE, EXHST TAIL 5.0" OD LONG
MATERIAL: 16 GA. 304/304L SS
REV: 01



2 PART NUMBER: 02250250-767-03
DESCRIPTION: CPLG, 1/4" NPT
MATERIAL: 304/304L SS
REV: 00

4.3 Exhaust pipe tail, 5 inches

Key	Part number	Qty	Description	Notes
1	02250250-767-01	1	PIPE,EXHST TAIL 5.0" OD LONG	
2	02250250-767-03	1	COUPLING,1/4" NPT	

Drawing notes

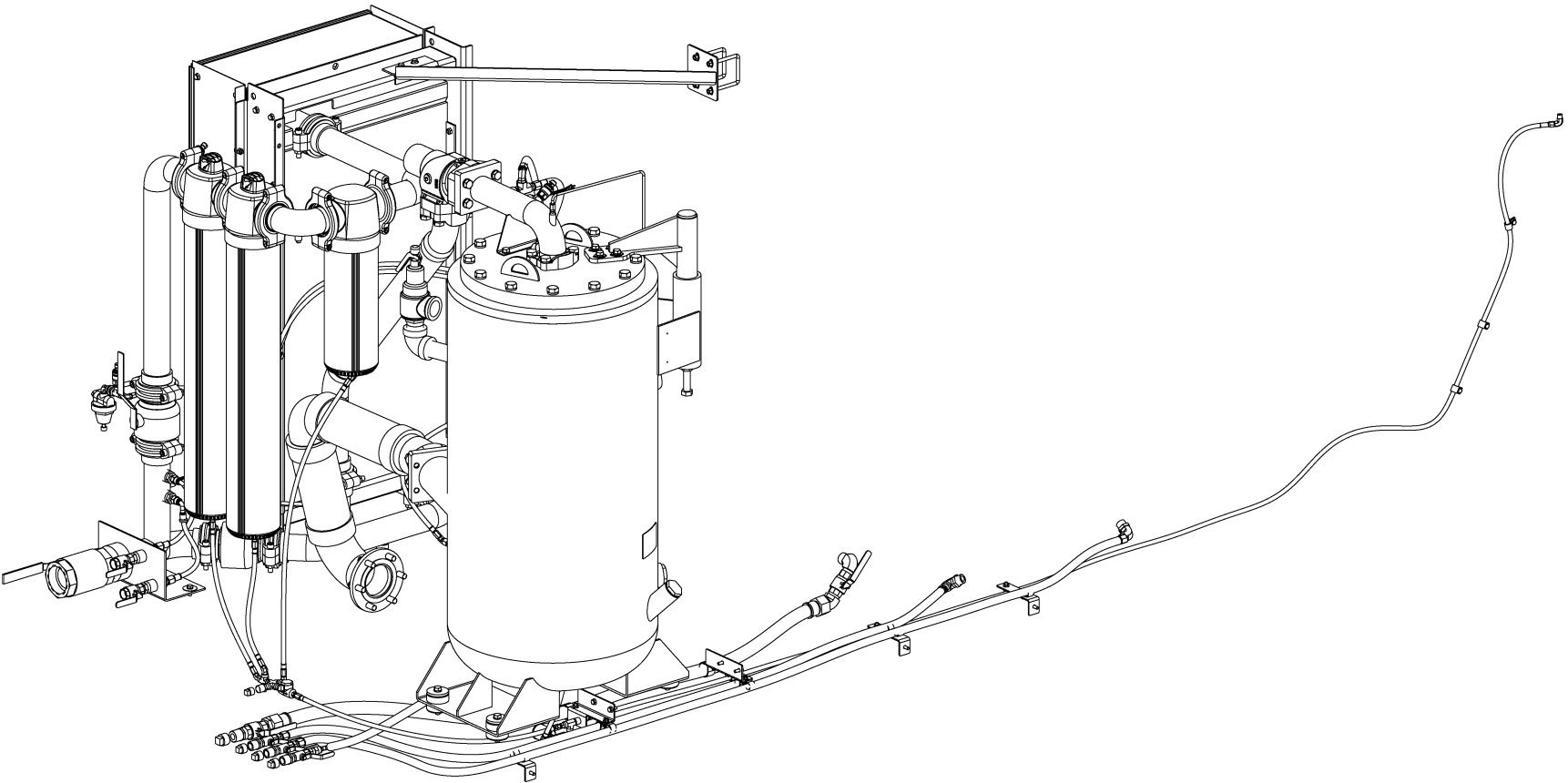
1	MARK/TAG COMPONENT/CONTAINER WITH SULLAIR PART NUMBER AND REVISION.
2	TUBE CUT-OFF TO BE SQUARE TO O.D. WITHIN 3 DEGREES MAXIMUM.
3	LIGHTLY DEBURR TUBE ENDS INTERNALLY AND EXTERNALLY.
4	MATERIAL: 5.00" O.D. 16GA. 304 STAINLESS STEEL TUBING.
5	CAP BOTH ENDS PER ANSI B93.4.
6	CAD MODELS ARE AVAILABLE UPON REQUEST.

Notes:



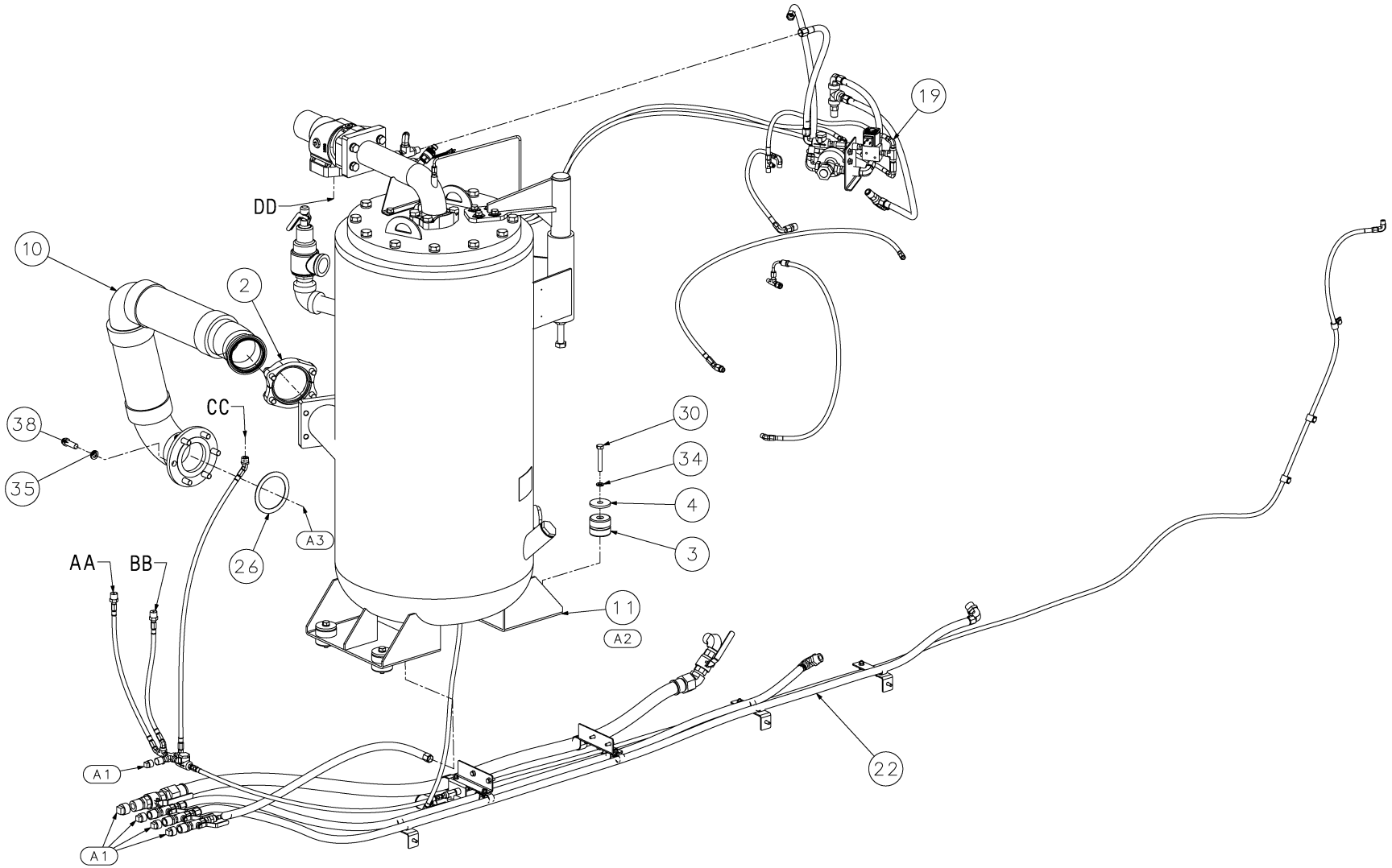
02250251-632 R02
Subject to EAR, ECCN EAR99 and related export control restrictions.

4.4 Discharge system - aftercooled/filtered with CMS



02250243-968 R01 (sh1)

4.4 Discharge system - aftercooled/filtered with CMS



4.4 Discharge system - aftercooled/filtered with CMS

Key	Part number	Qty	Description	Notes
1	02250100-926	1	FLANGE,KIT(SAE) SPLT 3" - VITON	
2	02250105-533	1	FLANGE,4" SAE J518 CODE 61	
3	02250125-473	4	MOUNT,VIB UNIVERSAL W/PLATE 375	
4	02250125-604	4	WASHER,SNUBBING 375 VIBRATION MT	
5	02250141-442	1	SENSOR, PRESS 225PSIG 1-5VDC	
6	02250161-277	1	SENSOR,TEMP THERMISTOR 3/4 O-RING	
7	02250167-628	7	COUPLING,FLEX 3IN 750PSI	
8	02250193-544	5	CLAMP,FX FILTER 925-1600	
9	02250208-571	1	SEPARATOR,WTR CS-1600 3" W/O DR	
10	02250218-915	1	PIPE ASSEMBLY,DISCH 1600	
11	02250219-208	1	SUB ASSEMBLY,MODULAR,SEP TANK 1600 LP	
12	02250219-351	1	PIPE ASSEMBLY,DISCH TEE 1600	
13	02250219-531	1	ELBOW,STL 3" DISCHARGE 1600G	
14	02250219-537	1	TUBE,STEEL 3" DISCHARGE 1600G	
15	02250219-545	1	PIPE ASSEMBLY,ACF DISCH 1600	
16	02250219-554	1	SUB ASSEMBLY,MODULAR,SERVICE VALVE AC	
17	02250219-596	1	PIPE ASSEMBLY,MPV / AC 1600	
18	02250219-728	1	SUB ASSEMBLY,MODULAR,AFTER CLR 1600 ACF	
19	02250219-753	1	SUB ASSEMBLY,MODULAR,CONTROL LINES	
20	02250219-923	2	VALVE,BALL 3" GROOVED END	
21	02250227-865	1	SUPPORT,BRACE ASSY A/C TOP 1600J	
22	02250243-970	1	SUB ASSEMBLY,MODULAR,DRAINS ACF CR	
23	02250247-559	1	FILTER,FX-1600-HR 3" NPT	
24	02250247-560	1	FILTER,FX-1600-FR 3" NPT	
25	250008-322	2	U-BOLT, HOSE REEL MNT 3" SQ	
26	250014-203	1	GASKET, DISCH PIPE 1250/1600	
27	250042-624	1	PLUG,STR THD 7/8-14 SAE VIT	
28	408300-005	1	CLAMP, HOSE O.D. 1.062	
29	829106-100	2	CAPSCREW,HEX GR5 3/8-16 X 1"	
30	829108-300	4	CAPSCREW,HEX GR5 1/2-13 X 3"	
31	829706-075	2	SCREW, HX SER WASH 3/8 X 3/4"	
32	829706-100	5	SCREW, HX SER WASH 3/8 X 1"	

4.4 Discharge system - aftercooled/filtered with CMS

Key	Part number	Qty	Description	Notes
33	837806-094	6	WASHER,SPRLOCK REG PLTD 3/8	
34	837808-125	4	WASHER, SPRLOCK REG PLTD 1/2"	
35	837810-156	6	WASHER, SPRLOCK REG PLTD 5/8"	
36	866506-337	4	NUT, HEX 3/8-16 PLT	
37	866900-010	1	PLUG, PIPE 1/4" 3000# STL PLT	
38	867310-175	6	CAPSCREW,FERRY HEAD 5/8-11 X 1 3/4"	
39	881506-162	2	WASHER, FLT LG 3/8 X 1-5/8 PLT	

Drawing notes

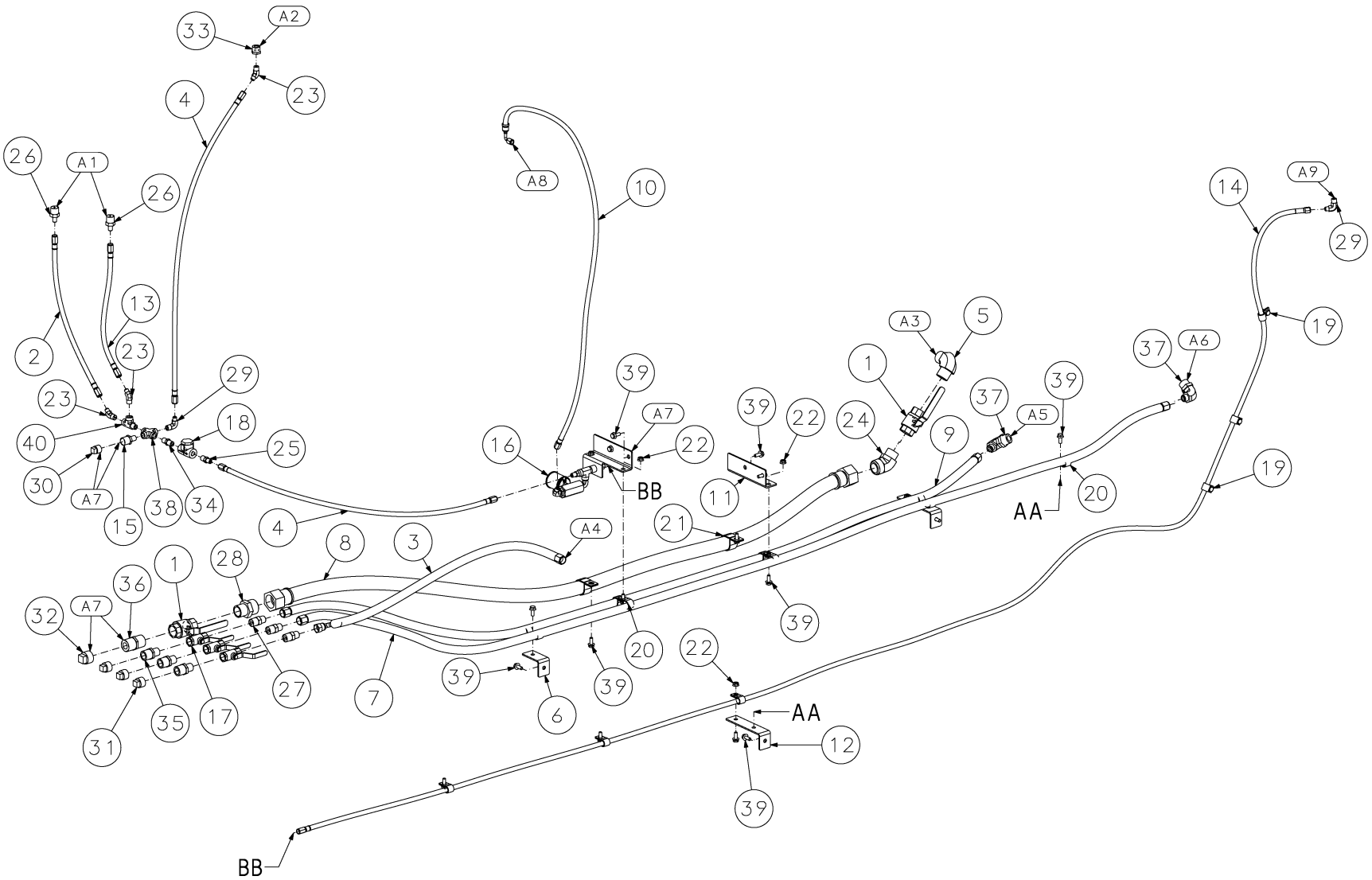
A1	TO FRAME
A2	TO FUEL TANK
A3	TO UNIT
A4	TO LIFT BAIL

Notes:



02250251-632 R02
Subject to EAR, ECCN EAR99 and related export control restrictions.

4.5 Drains - aftercooled/filtered with CMS



4.5 Drains - aftercooled/filtered with CMS

Key	Part number	Qty	Description	Notes
1	02250176-675	2	VALVE,BALL 1"FEM NPT	
2	02250190-392	1	HOSE,MP 3/16" ID X 20 OAL	
3	02250196-661	1	HOSE,MP 13/32ID X 40 OAL	
4	02250202-053	2	HOSE,MP 3/16" ID X 38OAL	
5	02250216-267	1	ELBOW,PIPE 90M 1"	
6	02250220-443	1	SUPPORT,BRACKET CENT DRAIN	
7	02250224-092	1	HOSE,ASSY MP 13/32" ID 121 OAL	
8	02250226-849	1	HOSE,MP 1.125 X 76.00 OAL	
9	02250227-365	1	HOSE,ASSY MP 13/32ID X 95OAL	
10	02250232-015	1	HOSE,MP 3/16" ID X 52 OAL	
11	02250243-988	1	SUPPORT,BRACKET CENT DRAIN	
12	02250244-060	2	SUPPORT,BRACKET CENT DRAIN	
13	02250249-754	1	HOSE,MP 3/16" ID X 16 OAL	
14	02250250-820	1	HOSE,MP 3/16" ID X 172 OAL	
15	02250250-828	1	NIPPLE,PIPE HEX 1/2 X 1/4" SOLID	
16	02250250-838	1	SUB ASSEMBLY,MODULAR,BLOWDOWN	
17	047117	3	VALVE,BALL 1/2"NPT	
18	241771	1	STRAINER,V - TYPE 250# X 1/4"	
19	408300-001	6	CLAMP, HOSE O.D. .562	
20	408300-003	9	CLAMP, HOSE O.D. .750	
21	408300-007	2	CLAMP, HOSE O.D. 1.500	
22	825305-283	7	NUT, HEX FLGD PLTD 5/16-18	
23	860004-025	3	ELBOW, 37FL 45 M 1/4 X 1/4"	
24	860020-100	1	ELBOW, 37FL 45M 1 1/4" X 1"	
25	860104-025	1	CONNECTOR, 37FL/MPT 1/4 X 1/4"	
26	860104-050	2	CONNECTOR, 37FL/MPT 1/4 X 1/2"	
27	860108-050	3	CONNECTOR, 37FL/MPT 1/2 X 1/2"	
28	860120-100	1	CONNECTOR, 37FL/MPT 1-1/4 X 1"	
29	860204-025	2	ELBOW, 37FL 90M 1/4 X 1/4"	
30	866900-020	1	PLUG, PIPE 1/2" 3000# STL PLT	
31	866900-030	3	PLUG, PIPE 3/4" 3000# STL PLT	
32	866900-040	1	PLUG, PIPE 1" 3000# STL PLT	

4.5 Drains - aftercooled/filtered with CMS

Key	Part number	Qty	Description	Notes
33	867102-010	1	BUSHING,RED 1/2 X 1/4" STL PLT	
34	868504-025	1	NIPPLE,PIPE HEX 1/4 X 1/4" PLT	
35	868512-050	3	NIPPLE,PIPE HEX 3/4 X 1/2" PLT	
36	868516-100	1	NIPPLE,PIPE HEX 1 X 1" PLT	
37	870608-012	2	CONNECTOR,90D STRXJIC 3/4 X 1-1/16	
38	874804-004	1	CROSS, FEMALE PIPE NPTF 1/4"	
39	884305-075	20	SCREW,HEX SER WASH 5/16-18X3/4	
40	895504-025	1	TEE,MALE/FEMALE/FEMALE 1/4	

Drawing notes

A1	TO FILTER
A2	TO H2O SEPARATOR DRAIN PORT
A3	TO OIL PAN
A4	TO SEPARATOR TANK
A5	TO OIL COOLER PIPE
A6	TO RADIATOR PIPE
A7	TO FRAME
A8	TO CLOSE PILOT ON OIL STOP VALVE
A9	TO EXHAUST PIPE

WARNING

Breathing diesel engine exhaust exposes you to chemicals known to the State of California to cause cancer and birth defects or other reproductive harm.

- Always start and operate the engine in a well-ventilated area.
- If in an enclosed area, vent the exhaust to the outside.
- Do not modify or tamper with the exhaust system.
- Do not idle the engine except as necessary.

For more information go to www.P65warnings.ca.gov/diesel



 **Hitachi Global Air Power US, LLC**

1 Sullair Way
Michigan City, IN 46360 USA
www.sullair.com
1-800-SULLAIR (USA only)
1-219-879-5451 (non-USA)

Information and specifications are subject to change without prior notice.
Subject to EAR, ECCN EAR99 and related export control restrictions.